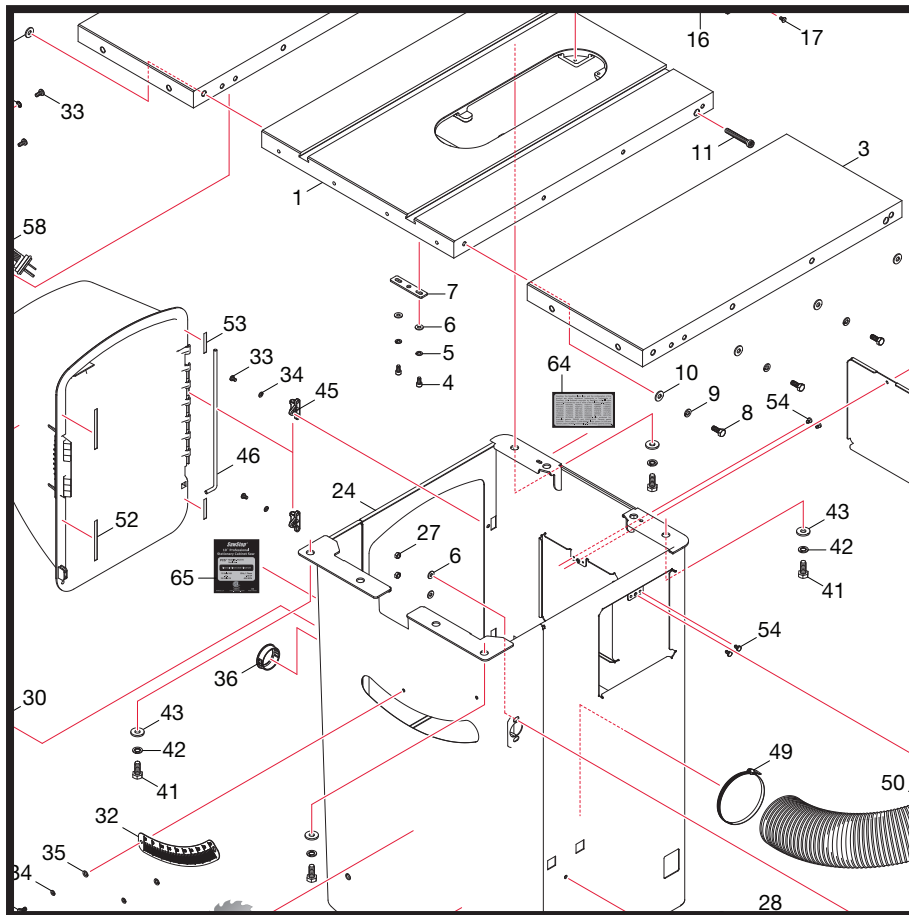




Model PCS175

# 10" Professional Cabinet Saw

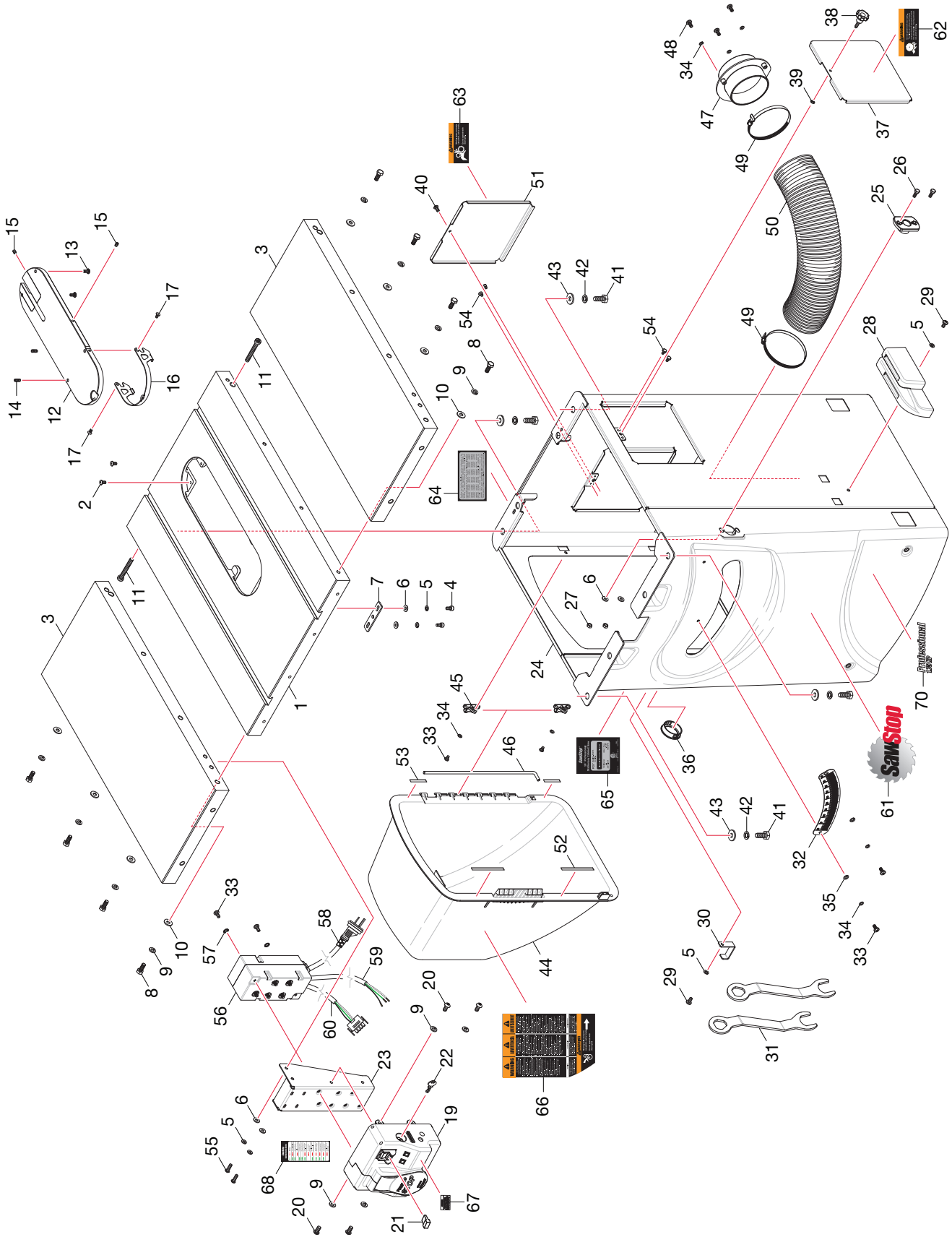
## Parts List



Cabinet and Table Exploded View .....	3
Cabinet and Table Parts List .....	4
Internal Assembly Exploded View .....	6
Internal Assembly Parts List .....	7
Arbor Assembly Exploded View .....	10
Arbor Asembly Parts List .....	11
Blade Guard and Miter Gauge Exploded View .....	13
Blade Guard and Miter Gauge Parts List .....	14
Literature, Hardware and Tools Parts List .....	15



# Cabinet and Table Exploded View



## Cabinet and Table Parts List

No.	Description	Part No.	Qty.
1	Table	PCS-001	1
2	Rear Lock Down Screw for Insert	PCS-002	2
3	Cast Iron Extension Wing	PCS-003	2
4	M6x1.0x12 Socket Cap Screw	PCS-004	2
5	M6 Lock Washer	PCS-005	6
6	M6x15x1.5 Washer	PCS-006	6
7	Table Alignment Bracket	PCS-007	1
8	M8x1.25x20 Hex Head Bolt	PCS-008	8
9	M8 Lock Washer	PCS-009	12
10	M8x20x2 Washer	PCS-010	8
11	M6x1.0x50 Socket Cap Screw	PCS-244	2
12	Standard Insert Assembly (includes items 13-18)	TSI-SLD	1
13	Rear Leveling Screw	PCS-013	2
14	M6x1.0x14 Set Screw	PCS-014	2
15	M6x1.0x8 Set Screw	PCS-015	2
16	Table Insert Lock-Down Lever	PCS-253	1
17	M4x0.7x10 Flat Head Phillips Screw	PCS-017	2
19	Switch Box Assembly (includes items 21-22, 67-68)	PCS-019	1
20	M8x1.25x12 Button Head Socket Screw	PCS-020	4
21	Switch Box Lock Out Key	PCS-021	1
22	Bypass Key	PCS-022	1
23	Switch Box Mounting Bracket	PCS-023	1
24	Cabinet	PCS-024	1
25	Tilt Shaft Mounting Bracket	PCS-025	1
26	M6x1.0x15 Hex Head Bolt	PCS-026	2
27	M6x1.0 Hex Nut	PCS-027	2
28	Accessory Tool Holder	PCS-028	1
29	M6x1.0x12 Button Head Socket Screw	PCS-029	2
30	Blade Wrench Holder	PCS-030	1
31	Blade Wrench	PCS-031	2
32	Tilt Angle Scale	PCS-032	1
33	M5x0.8x10 Pan Phillips Screw	PCS-033	6
34	M5 Lock Washer	PCS-034	7
35	M5x10x1 Washer	PCS-035	2
36	Switch Box Cable Grommet	PCS-036	1
37	Side Cabinet Access Door	PCS-037	1
38	Cabinet Access Door Lock Knob	PCS-038	1
39	M6 Push Nut	PCS-039	1
40	M6x1.0x10 Button Head Socket Screw	PCS-040	1
41	M10x1.5x25 Hex Head Bolt	PCS-041	4

## Cabinet and Table Parts List (cont.)

No.	Description	Part No.	Qty.
42	M10 Lock Washer	PCS-042	4
43	M10x25x3 Washer	PCS-043	4
44	Motor Cover	PCS-044	1
45	Motor Cover Mounting Bracket	PCS-045	2
46	Motor Cover Rod	PCS-046	1
47	Dust Collection Port	PCS-047	1
48	M5x3x15 Button Head Phillips Screw	PCS-048	3
49	Hose Clamp	PCS-049	2
50	Dust Collection Hose	PCS-050	1
51	Rear Cabinet Access Door	PCS-051	1
52	Motor Cover Foam Large	PCS-052	2
53	Motor Cover Foam Small	PCS-053	2
54	Access Door Rubber Pad	PCS-054	4
55	M6x1.0x20 Button Head Socket Screw	PCS-055	2
56	115V Contactor Box	PCS-057	1
57	M5 External Tooth Lock Washer	PCS-058	2
58	Main Power Cable	PCS-243	1
59	Motor Cable Assembly	PCS-060	1
60	Motor Control Cable Assembly	PCS-061	1
61	SawStop Label	PCS-062	1
62	Blade Retraction Warning Label	PCS-063	1
63	Gear Warning Label	PCS-064	1
64	Patent Label	PCS-065	1
65	Specification Label	PCS-067	1
66	Main Warning Label	PCS-257	1
67	Main Power Label	PCS-069	1
68	System Status Label	PCS-070	1
70	Professional 1.75HP Model Label	PCS-259	1



## Internal Assembly Parts List

No.	Description	Part No.	Qty.
1	1.75 HP, 1 PH, 115/230V, 60Hz, TEFC Motor	PCS-073	1
2	M12x1.75x65 Hex Head Bolt	PCS-074	2
3	M5x5x30 Key	PCS-075	1
4	Motor Pulley	PCS-077	1
5	M6x1.0x8 Set Screw	PCS-078	2
6	Front Trunnion Bracket	PCS-079	1
7	M10x1.5x25 Hex Head Bolt	PCS-080	4
8	M10 Lock Washer	PCS-081	4
9	M10x25x3 Washer	PCS-082	6
10	M10x1.5x30 Hex Head Bolt	PCS-083	3
11	M10x1.5 Hex Jam Nut	PCS-084	3
12	M8x20 Pin	PCS-085	2
13	M8x1.25x16 Set Screw	PCS-086	1
14	Front Trunnion	PCS-087	1
15	Upper Torque Tube	PCS-088	1
16	M6x1.0x20 Socket Cap Screw	PCS-089	18
17	M6 Lock Washer	PCS-090	27
18	Cable Clamp	PCS-091	3
19	Rear Trunnion	PCS-092	1
20	Rear Trunnion Bracket	PCS-093	1
21	M8x1.0x20 Set Screw	PCS-094	1
22	Lower Torque Tube	PCS-095	1
23	M6x1.0x12 Socket Cap Screw	PCS-096	3
24	Rubber Bumper	PCS-097	1
25	M5x2.2x20 Button Head Phillips Screw	PCS-098	8
26	M5 Lock Washer	PCS-099	4
27	Dust Shroud (inner half)	PCS-100	1
28	Dust Shroud (outer half)	PCS-101	1
29	Dust Shroud Blast Shield	PCS-102	1
30	Elevation Control Shaft Front Bushing	PCS-103	1
31	Tilt Indicator	PCS-104	1
32	M6x1.0x15 Button Head Socket Screw	PCS-105	2
33	Tilt Handwheel Lock Knob	PCS-106	1
34	Handwheel Handle	PCS-107	2
35	Handwheel	PCS-108	2
36	M6x1.0x8 Set Screw	PCS-109	2
37	M5x5x25 Key	PCS-110	2
38	Control Shaft Key	PCS-111	2
39	Elevation Control Shaft	PCS-245	1

## Internal Assembly Parts List (cont.)

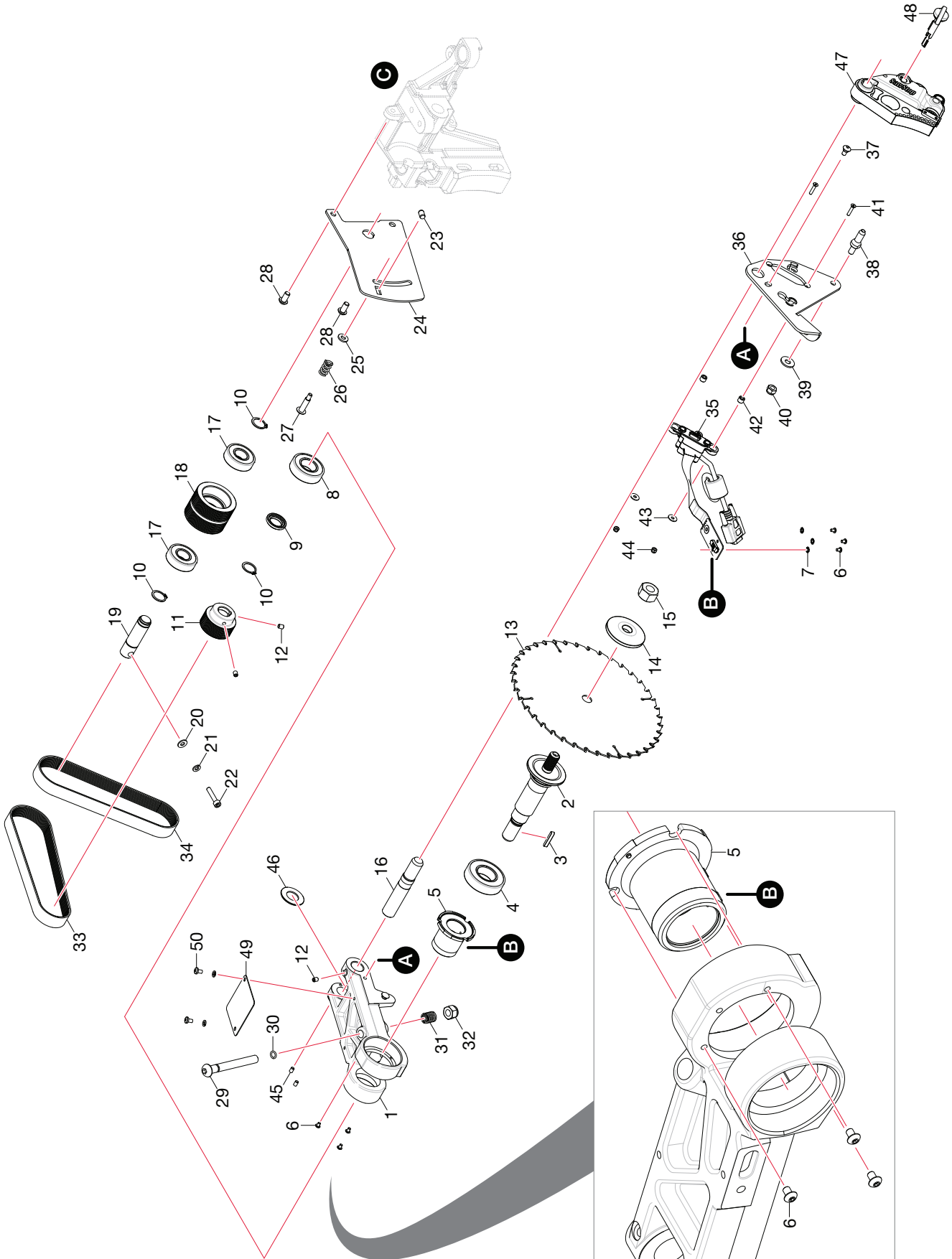
No.	Description	Part No.	Qty.
40	Elevation Control Shaft Rear Bushing	PCS-246	1
41	M4x4x20 Key	PCS-114	1
42	Elevation Control Worm	PCS-115	1
43	M8x23x2 Hardened Washer	PCS-116	1
44	M8x1.25x16 Button Head Socket Screw	PCS-117	1
45	Tilt Control Shaft	PCS-118	1
46	M4x20 Spring Pin	PCS-119	1
47	Tilt Control Worm	PCS-120	1
48	M12x21x2 Washer	PCS-121	1
49	Tilt Control Worm Adjustment Bracket	PCS-122	1
50	Tilt Control Worm Adjustment Bracket Bushing	PCS-123	1
51	M8x16x2 Washer	PCS-124	2
52	Tilt Control Shaft Spacer	PCS-125	1
53	Elevation Plate	PCS-126	1
54	Primary Elevation Shaft	PCS-127	1
55	Primary Elevation Shaft Bushing	PCS-128	2
56	M8x1.25x40 Socket Cap Screw	PCS-129	2
57	M8 Lock Washer	PCS-130	7
58	M8x1.25x30 Socket Cap Screw	PCS-131	3
59	Gas Spring Mounting Bracket	PCS-132	1
60	Gas Spring	PCS-256	1
61	Elevation Threaded Rod	PCS-134	1
62	M8x1.25x25 Hex Head Bolt	PCS-135	2
63	M6x1.0x16 Set Screw	PCS-136	2
64	Secondary Elevation Shaft	PCS-137	1
65	Secondary Elevation Shaft Bushing	PCS-138	1
66	M6x1.0x55 Socket Cap Screw	PCS-139	2
67	Secondary Elevation Shaft Standoff	PCS-140	2
68	M6x1.0 Lock Nut	PCS-141	2
69	M13 External Retaining Ring	PCS-142	2
70	Elevation Worm Gear	PCS-143	1
71	M4x4x15 Key	PCS-144	2
72	Elevation Gear Shaft Mounting, Replacement	PCS-145, PCS-146	2
74	Elevation Gear Shaft	PCS-147	1
75	M6x15x1.5 Washer	PCS-148	6
76	Elevation Pinion Gear	PCS-149	1
77	Spreader Mounting Plate	PCS-150	1
78	M10x1.5x25 Socket Cap Screw	PCS-151	2
79	M8x1.0 Hex Nut	PCS-152	1
80	Spreader Positioning Plate	PCS-153	1



## Internal Assembly Parts List (cont.)

No.	Description	Part No.	Qty.
81	M3x0.5x6 Set Screw (for saws with a serial number prior to P154900001)	PCS-154	1
	M4x0.7x6 Set Screw (for saws with a serial number P154900001 or later)	PCS-274	
82	Clamp Spring	PCS-155	1
83	Clamping Plate	PCS-156	1
84	Clamping Plate Cam Bushing	PCS-157	1
85	Clamp Handle	PCS-158	1
86	M8x1.0x40 Hex Head Bolt	PCS-159	1
87	M4x0.7x6 Set Screw	PCS-160	1
88	Riving Knife	PCS-161	1
89	Elevation Handwheel Lock Knob	PCS-162	1
90	Tilt Control Shaft Collar	PCS-163	1
91	M4x0.7x10 Socket Cap Screw	PCS-164	1
92	M8 Polyurethane O-Ring	PCS-165	1
93	Dust Shroud Clip	PCS-166	2
94	Dust Shroud Mounting Bracket	PCS-167	1
95	M5.2x10 Spring Pin	PCS-168	1
96	M6x1.0x30 Socket Cap Screw	PCS-169	4
97	M6x22 Pin	PCS-242	2
98	Elevation Control Shaft Collar	PCS-247	1
99	M5x0.8x16 Socket Cap Screw	PCS-248	1
100	M20x32x2 Washer	PCS-249	1
101	M6x1.0x10 Custom Set Screw	PCS-250	1
102	M6x1.0x25 Socket Cap Screw	PCS-261	2

# Arbor Assembly Exploded View



## Arbor Assembly Parts List

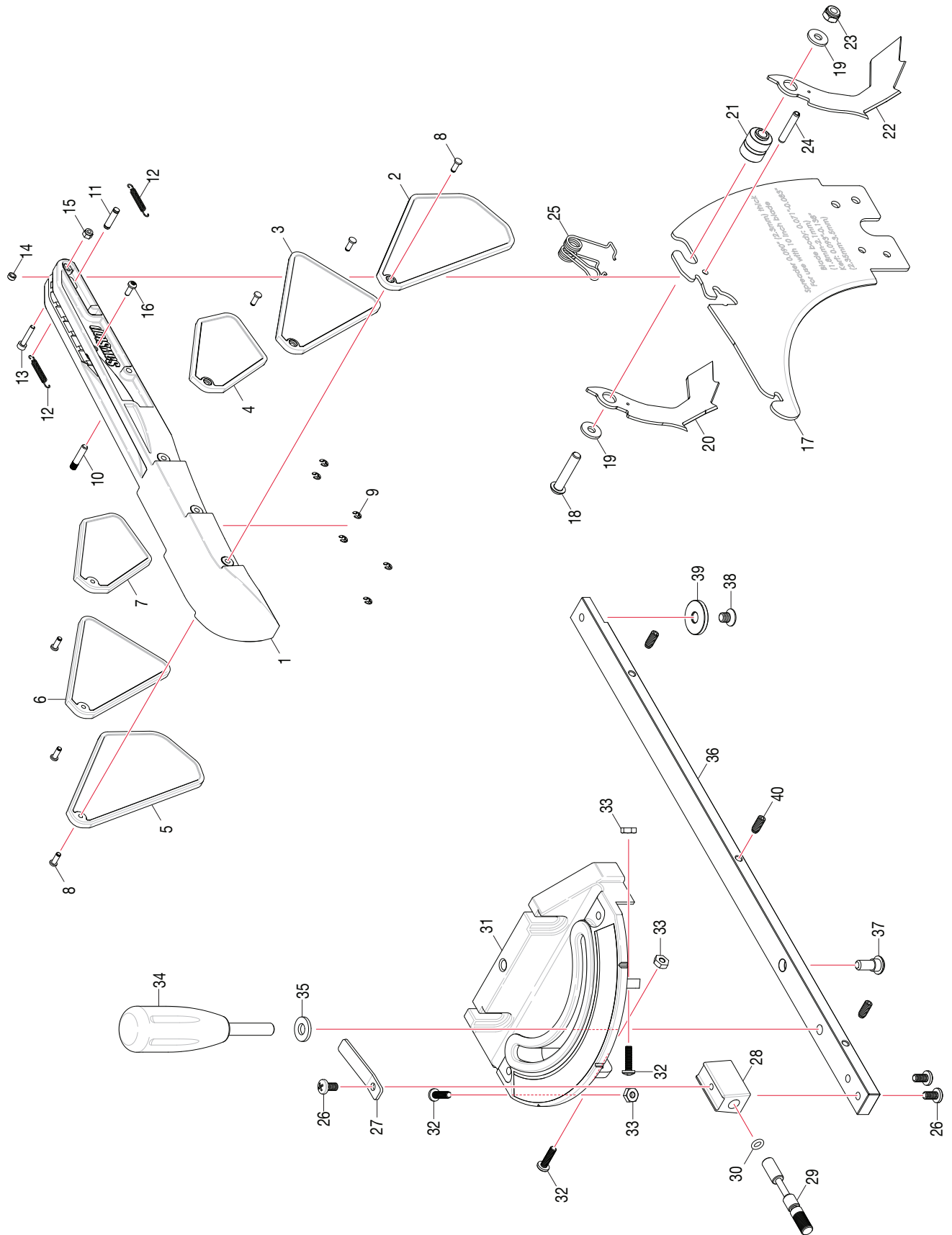
No.	Description	Part No.	Qty.
1	Arbor Block	PCS-170	1
2	Arbor	PCS-171	1
3	M5x5x30 Key	PCS-172	1
4	Main Arbor Bearing	PCS-173	1
5	Electrode Shell	PCS-174	1
6	M4x0.7x6 Button Head Socket Screw	PCS-175	6
7	M4 External Tooth Lock Washer	PCS-176	3
8	Second Arbor Bearing	PCS-177	1
9	Arbor Spacer	PCS-178	1
10	M20 External Retaining Ring	PCS-179	3
11	Arbor Pulley	PCS-180	1
12	M6x1.0x8 Set Screw	PCS-181	3
13	10" Combination Saw Blade	PCS-182	1
14	Arbor Washer	PCS-183	1
15	Arbor Nut	PCS-184	1
16	Pivot Shaft	PCS-185	1
17	Double Pulley Bearing	PCS-186	2
18	Double Pulley	PCS-187	1
19	Double Pulley Shaft	PCS-188	1
20	M6x16x3 Washer	PCS-189	1
21	M6 Lock Washer	PCS-190	1
22	M6x1.0x30 Socket Cap Screw	PCS-191	1
23	Retraction Guide	PCS-192	1
24	Retraction Bracket	PCS-193	1
25	M8x16x2 Washer	PCS-194	1
26	Retraction Spring	PCS-195	1
27	M6x1x33 Hex Head Shoulder Screw	PCS-196	1
28	M8x1.25x16 Button Head Socket Screw	PCS-197	2
29	M12 Brake Positioning Bolt	PCS-198	1
30	Brake Positioning Bolt O-Ring	PCS-199	1
31	Brake Positioning Spring	PCS-200	1
32	M12x1.75 Lock Nut	PCS-201	1
33	Arbor Belt	PCS-202	1
34	Motor Belt	PCS-203	1
35	Cartridge Cable	PCS-204	1
36	Cartridge Bracket	PCS-205	1
37	M6x1.0x12 Button Head Shoulder Screw	PCS-206	1
38	Threaded Pin	PCS-207	1
39	M8x20x2 Washer	PCS-208	1
40	M8x1.25 Lock Nut (silver zinc)	PCS-209	1
41	M4x0.7x20 Flat Head Socket Screw	PCS-210	2

## Arbor Assembly Parts List (cont.)

No.	Description	Part No.	Qty.
42	Cartridge Bracket Spacer	PCS-211	2
43	M4x14x1 Washer	PCS-212	2
44	M4x0.7 Lock Nut	PCS-213	2
45	M5x0.8x8 Set Screw	PCS-214	2
46	Brass Pressure Ring	PCS-215	1
47	Brake Cartridge for 10" Blade	TSBC-10R2 or TSBC-10R3	1
	Brake Cartridge for 8" Dado Set	TSDC-8R2 or TSDC-8R3	
48	Brake Cartridge Key	PCS-217	1
49	Blade Spacing Attention Tag	PCS-218	1
50	M5x0.8x8 Pan Head Phillips Screw (with M5 lock washer)	PCS-219	2



# Blade Guard and Miter Gauge Exploded View



## Blade Guard and Miter Gauge Parts List

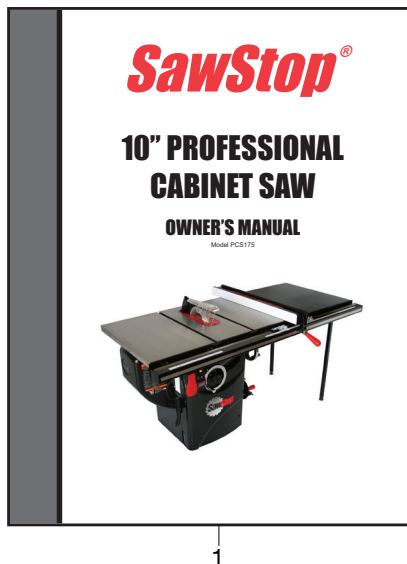
No.	Description	Part No.	Qty.
	Micro Guard Blade Guard Assembly	TSG-MG	1
1	Top Guard	TSG-MG-001	1
2	Side Guard Front Right	TSG-MG-002	1
3	Side Guard Middle Right	TSG-MG-003	1
4	Side Guard Rear Right	TSG-MG-004	1
5	Side Guard Front Left	TSG-MG-005	1
6	Side Guard Middle Left	TSG-MG-006	1
7	Side Guard Rear Left	TSG-MG-007	1
8	Grooved Clevis Pin (3mm x 8mm)	TSG-MG-008	6
9	3mm E-Style Retaining Ring	TSG-MG-009	6
10	Front Dowel Pin (4mm x 22mm)	TSG-MG-010	1
11	Rear Grooved Pin (4mm x 15mm)	TSG-MG-011	1
12	Top Guard Extension Spring	TSG-MG-012	2
13	M3x0.5x16 Socket Head Cap Screw	TSG-MG-013	1
14	Rear Grooved Pin Spacer	TSG-MG-014	1
15	M3x0.5 Lock Nut	TSG-MG-015	1
16	M3x1.06x8 Pan Head Phillips Screw	TSG-MG-016	1
17	Spreader	TSG-MG-017	1
18	M6x1.0x30 Button Head Socket Screw	TSG-MG-018	1
19	M6x16x1.5 Washer	TSG-MG-019	2
20	Anti-Kickback Pawl Left	TSG-MG-020	1
21	Pawl Bushing	TSG-MG-021	1
22	Anti-Kickback Pawl Right	TSG-MG-022	1
23	M6x1.0 Lock Nut	TSG-MG-023	1
24	M4x25 Spring Pin	TSG-MG-024	1
25	Pawl Spring	TSG-MG-025	1
1-16	Complete Top Guard Assembly	TSG-MG-026	1
	Miter Gauge Assembly	PCS-220	1
26	3/16-24NCx3/8" Phillips Head Screw	PCS-221	3
27	Angle Indicator	PCS-222	1
28	Mounting Block	PCS-223	1
29	Indexing Pin	PCS-224	1
30	O-Ring	PCS-225	1
31	Miter Gauge Head	PCS-226	1
32	8-32 NCx5/8" Phillips Head Screw	PCS-227	3
33	8-32 NC Nut	PCS-228	3
34	Miter Gauge Handle	PCS-229	1
35	M8x18x3 Washer	PCS-230	1
36	Miter Gauge Bar	PCS-252	1
37	Gauge Head Mounting Screw	PCS-232	1

## Blade Guard and Miter Gauge Parts List (cont.)

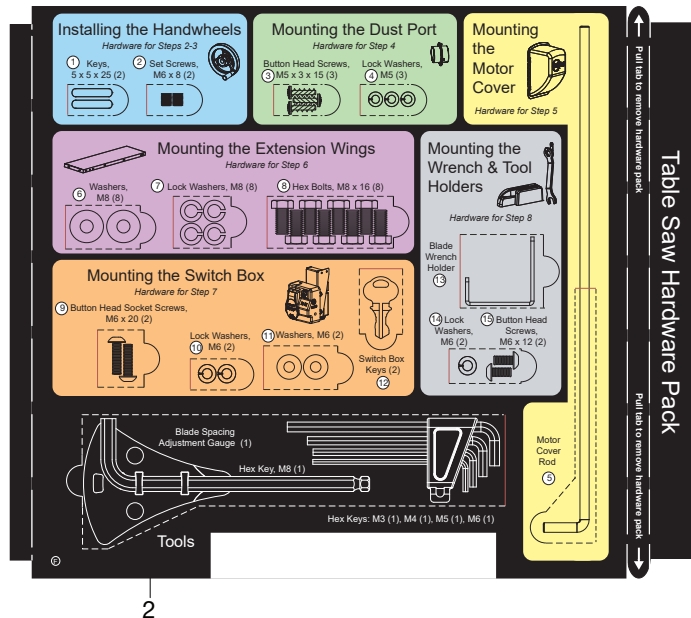
No.	Description	Part No.	Qty.
38	M6x1.0x8 Flat Head Phillips Screw	PCS-233	1
39	Retaining Disc	PCS-234	1
40	M5x0.8x12 Spring Bearing	PCS-251	3

## Literature, Hardware and Tools Parts List

No.	Description	Part No.	Qty.
1	PCS175 10" Professional Saw Owner's Manual	PCS-254	1
2	Table Saw Hardware Pack	PCS-236	1
3	PCS175 Unpacking Procedure Poster	PCS-255	1
4	Hex Key Tool Holder (includes M3, M4, M5, M6 hex keys)	PCS-238	1
5	M8 Ball End Hex Key	PCS-239	1
6	Blade Spacing Adjustment Gauge	PCS-240	1
7	Push Stick	PCS-241	1



1



2



SawStop, LLC  
11555 SW Myslony Street  
Tualatin, Oregon 97062 USA  
[www.sawstop.com](http://www.sawstop.com)

Main Phone - (503) 570-3200  
Service - (503) 582-9934  
Fax - (503) 570-3303  
Email: [info@sawstop.com](mailto:info@sawstop.com)